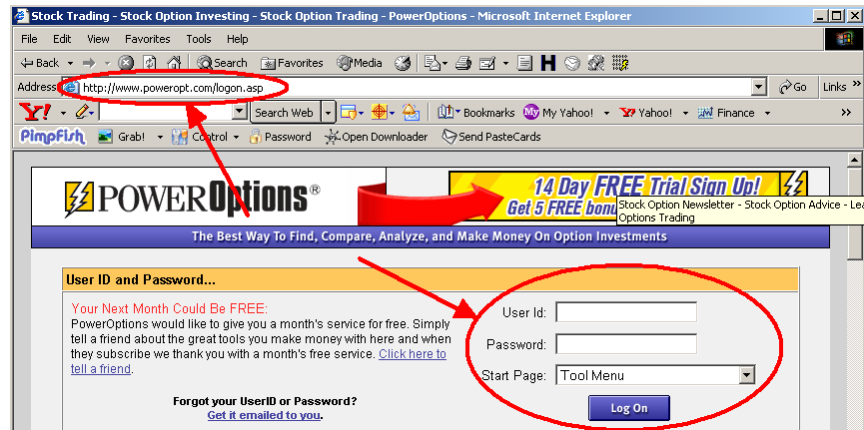


PowerOptions Quick Start Guide:

Getting Started / Setup:

- A. Log On at <http://www.poweropt.com/logon.asp> using your User ID and Password with the Tool Menu selected as the start page.



- B. Select the Strategy you wish to screen by: Covered Calls, Naked Put, Calendar Call, Bull Put Credit, Long Call, Bear Call Credit, or Other Strategies.



- C. Click [Search](#) from the strategy you selected.

Covered Call Overview [hide](#)

- Buy a stock and sell a call option. The call is secured (covered) by the stock.
- This is a bullish to neutral strategy. You expect the stock price to stay the same or go up.
- A covered call is a conservative strategy used for generating current income and enhances dividends.
- The covered call strategy is one of the most popular option strategies used by 75% of our subscribers.
- View the [Covered Call Strategy Help](#) page to see more details.

Covered Call Tools

- [Quick Find](#) Starting with a stock symbol, see the near month covered call opportunities.
- [Option Chain](#) See the covered call returns for every strike price and month for a given stock.
- [Search](#) Search the universe of options to find new opportunities using SmartSearchXL®.
- [Sample Searches](#) Example themed covered call reports to show use of SmartSearchXL®.
- [Search by Symbol](#) Search for new opportunities for a specific stock or index.
- [Covered Call Wizard](#) If you need help in setting the screening values for SmartSearchXL, this will help.
- [My Portfolio](#) Management tools to paper trade or track actual positions.
- [Back Test](#) A SmartHistoryXL screen on a past date to see how values selected did in the future. ([SmartHistoryXL Instructions](#))
- [Learning Kit](#) A home study course on the covered call strategy.

Profit/Loss

D. Scroll down below the listed trades and take a look at the parameter field. You should see a field for “Search Settings Saved As: Initial Values”.

Mr. Trialer's Covered Call SmartSearchXL Results

7/12/2007 11:54:32 AM EST Real Time August ordered by Assigned - Filtered

More Info	Company Name	Stock Sym	Last Stock Price & Chg	Option Sym	Expire/Strike & Days To Exp	Opt Bid	Net Debit	% Dnsd Prot.	% If Unch.	% If Assnd.	% Prob Assnd
▶	Smith Micro Software Inc.	SMSI	17.17 (-0.14)	QPMHD	07 AUG 20.0 (37)	0.55	16.62	3.2	3.3	20.3	23.3
▶	Trina Solar Ltd.	TSL	65.47 (+1.12)	TSLHO	07 AUG 75.0 (37)	3.10	62.37	4.7	5.0	20.3	27.9
▶	Cross Inc.	CROX	47.89 (-0.69)	CQJHK	07 AUG 55.0 (37)	2.05	45.84	4.3	4.5	20.0	24.0
▶	JA Solar Holdings Co. Ltd.	JASO	40.43 (+1.59)	QJPHI	07 AUG 45.0 (37)	2.45	37.98	6.1	6.5	18.5	33.3
▶	Trina Solar Ltd.	TSL	65.47 (+1.12)	TSLHN	07 AUG 70.0 (37)	4.60	60.87	7.0	7.6	15.0	38.6
▶	Sierra Wireless Inc.	SWIR	27.25 (+0.79)	IYGHF	07 AUG 30.0 (37)	0.90	26.35	3.3	3.4	13.9	28.2
▶	NetLogic Microsystems Inc.	NETL	32.15 (+0.20)	LKTHG	07 AUG 35.0 (37)	1.35	30.80	4.2	4.4	13.6	31.6
▶	Allis-Chalmers Energy Inc.	ALY	27.41 (+0.56)	ALYHF	07 AUG 30.0 (37)	0.85	26.56	3.1	3.2	13.0	29.0
▶	Cross Inc.	CROX	47.89 (-0.69)	CQJHU	07 AUG 50.0 (37)	3.50	44.39	7.3	7.9	12.6	41.3
▶	LJ Intl. Inc.	JADE	12.01 (+0.15)	UODHV	07 AUG 12.5 (37)	0.85	11.16	7.1	7.6	12.0	43.7
▶	Knot Inc. (The)	KNOT	20.78 (+0.20)	BQCHX	07 AUG 22.5 (37)	0.65	20.13	3.1	3.2	11.8	27.8
▶	Travelzoo Inc.	TZOO	28.15 (-0.24)	QTVHF	07 AUG 30.0 (37)	1.25	26.90	4.4	4.6	11.5	35.8
▶	Smith Micro Software Inc.	SMSI	17.17 (-0.14)	QPMHW	07 AUG 17.5 (37)	1.45	15.72	8.4	9.2	11.3	46.3
▶	Suntech Power Co. Ltd.	STP	42.00 (+1.20)	STPHI	07 AUG 45.0 (37)	1.50	40.50	3.6	3.7	11.1	32.8
▶	JA Solar Holdings Co. Ltd.	JASO	40.43 (+1.59)	QJPHH	07 AUG 40.0 (37)	4.40	36.03	10.9	11.0	11.0	51.7
▶	Daktronics Inc.	DAKT	23.32 (+0.17)	GKCHE	07 AUG 25.0 (37)	0.80	22.52	3.4	3.6	11.0	29.4
▶	MEMC Electronic Materials Inc.	WFR	61.20 (+0.20)	WFRHM	07 AUG 65.0 (37)	2.60	58.60	4.2	4.4	10.9	34.6
▶	VASCO Data Security Intl. Inc.	VDSI	23.75 (+0.12)	QFNHF	07 AUG 25.0 (37)	1.15	22.60	4.8	5.1	10.6	38.0
▶	Sigma Designs Inc.	SIGM	28.23 (-0.05)	MGNHF	07 AUG 30.0 (37)	1.10	27.13	3.9	4.1	10.6	34.9
▶	Trina Solar Ltd.	TSL	65.47 (+1.12)	TSLHM	07 AUG 65.0 (37)	6.50	58.97	9.9	10.2	10.2	51.2

1 • 2 • 3 • 4 • 5 • 6 Next (1-20 of 340 total results)

Mr. Trialer's Covered Call SmartSearchXL Settings

Search Settings Saved As: **Initial Values - ATM** Save Submit These Settings

E. Click the drop down menu and toggle through the other pre-set searches (if available). Determine which set of criteria in this strategy is a good starting point for your investing methods.

Mr. Trialer's Covered Call SmartSearchXL Settings

Search Settings Saved As: **Initial Values - ATM** Save Submit These Settings

Description: Default ATM trending **Initial Values - ATM** Change the values to meet your requirements.

Sort Results Table By: % If Assigned

Option Expiration Time Frame: August

% Downside Protection: 13 to

% EPS Growth: 7 to

Price/Earnings: 0 to 170

F. Take some time to review all of the criteria that can be used to screen by in your selected strategy. Add in any filters that match your investing ideas, or remove any that do not pertain to you. Also, make sure you are sorting the results by the criteria that you want to see.

The screenshot shows a complex search criteria configuration interface. It includes a grid of various financial and technical indicators, each with input fields for values and ranges. On the left, there are sections for 'Show in-the-money', 'Show out-of-the-money', 'Earnings Date', and 'Ex Dividend Date'. At the bottom, there are dropdown menus for 'Sectors/Industries', 'Recommended Lists', and 'Simple Moving Average'.

G. Run your search by clicking the Submit These Settings button. The system will now re-run your search and find only those trades that match your criteria. (You can save this search by clicking the 'Save' button, so you will always have the new criteria available).

	VASCO Data Security Intl. Inc.	VDSI	23.67 (+0.04)	GFNHE	07 AUG 25.0 (37)	1.15	22.52	4.9	5.1	11.0	37.2
	Daktronics Inc.	DAKT	23.35 (+0.20)	GKCHE	07 AUG 25.0 (37)	0.80	22.55	3.4	3.5	10.9	29.8
	Trina Solar Ltd.	TSL	65.09 (+0.74)	TSLHM	07 AUG 65.0 (37)	6.40	58.69	9.8	10.8	10.8	50.2
	Sigma Designs Inc.	SIGM	28.35 (+0.07)	MQNHF	07 AUG 30.0 (37)	1.20	27.15	4.2	4.4	10.5	35.9
	MEMC Electronic Materials Inc.	WFR	61.48 (+0.48)	WFRHM	07 AUG 65.0 (37)	2.65	58.83	4.3	4.5	10.5	35.7
	Interactive Intelligence Inc.	ININ	21.35 (+0.20)	NGXHX	07 AUG 22.5 (37)	0.95	20.40	4.5	4.7	10.3	37.0

1 • 2 • 3 • 4 • 5 • 6 Next (1-20 of 335 total results)

Mr. Trialer's Covered Call SmartSearchXL Settings Get Your Search Results by Email

Search Settings Saved As: Save Submit These Settings

Description: Default ATM trending up selections to get you started. Change the values to meet your requirements.

Sort Results Table By

% If Assigned	Greater Than	% Return Difference	<input type="text" value=""/>	to	<input type="text" value="20"/>	Less Than	% EPS Growth	<input type="text" value="7"/>	to	<input type="text" value=""/>				
	Option Expiration Time Frame	% Downside Protection	<input type="text" value="3"/>	to	<input type="text" value=""/>	Greater Than	Price/Earnings	<input type="text" value="0"/>	to	<input type="text" value="70"/>				
August	% Dnsd Prot. Annual	<input type="text" value=""/>	to	<input type="text" value=""/>	Less Than	Price/Earnings/Growth	<input type="text" value=""/>	to	<input type="text" value=""/>	% Of 52 Week Range	<input type="text" value=""/>	to	<input type="text" value=""/>	
Days To Expiration	% If Unchanged	<input type="text" value=""/>	to	<input type="text" value=""/>	Greater Than	Average Broker Rec	<input type="text" value=""/>	to	<input type="text" value="2.6"/>	Less Than	Average Rec Change	<input type="text" value=""/>	to	<input type="text" value=""/>
<input type="text" value=""/> to <input type="text" value=""/>	% If Assigned Annual	<input type="text" value=""/>	to	<input type="text" value=""/>	Greater Than	Average Stock Volume	<input type="text" value=""/>	to	<input type="text" value=""/>	Less Than	% Stock Volume	<input type="text" value=""/>	to	<input type="text" value=""/>
	Option Volume Today	<input type="text" value=""/>	to	<input type="text" value=""/>	Greater Than	Shares Outstanding	<input type="text" value=""/>	to	<input type="text" value=""/>	Less Than	Dividend Yield	<input type="text" value=""/>	to	<input type="text" value=""/>
	% Current Option Volume	<input type="text" value=""/>	to	<input type="text" value=""/>	Greater Than	Beta	<input type="text" value=""/>	to	<input type="text" value=""/>	Less Than	Historical Volatility	<input type="text" value=""/>	to	<input type="text" value=""/>
	Prev Option Volume	<input type="text" value=""/>	to	<input type="text" value=""/>	Greater Than	Market Capitalization	<input type="text" value=""/>	to	<input type="text" value=""/>	Less Than	Price/Sales	<input type="text" value=""/>	to	<input type="text" value="10"/>
	% Prev Option Volume	<input type="text" value=""/>	to	<input type="text" value=""/>	Greater Than	Average Stock Volume	<input type="text" value=""/>	to	<input type="text" value=""/>	Less Than	% Probability Assigned	<input type="text" value=""/>	to	<input type="text" value=""/>
	Open Interest	<input type="text" value=""/>	to	<input type="text" value=""/>	Greater Than	Put/Call OI Ratio	<input type="text" value=""/>	to	<input type="text" value=""/>	Less Than	Z Score	<input type="text" value=""/>	to	<input type="text" value=""/>
	Stock Price	<input type="text" value="9"/>	to	<input type="text" value="100"/>	Greater Than	Z' Score	<input type="text" value=""/>	to	<input type="text" value=""/>	Less Than	Springate	<input type="text" value=""/>	to	<input type="text" value=""/>
	Stock Change Today	<input type="text" value=""/>	to	<input type="text" value=""/>	Greater Than	RSI	<input type="text" value=""/>	to	<input type="text" value=""/>	Less Than				
	% Stock Change Today	<input type="text" value=""/>	to	<input type="text" value=""/>	Greater Than					Less Than				
	Option Bid Price	<input type="text" value="4"/>	to	<input type="text" value=""/>	Greater Than					Less Than				
	Black-Scholes Ratio (50 Day)	<input type="text" value=""/>	to	<input type="text" value=""/>	Greater Than					Less Than				
	Black-Scholes Ratio (SIV)	<input type="text" value=""/>	to	<input type="text" value=""/>	Greater Than					Less Than				
	Delta	<input type="text" value=""/>	to	<input type="text" value=""/>	Greater Than					Less Than				
	Implied Volatility	<input type="text" value=""/>	to	<input type="text" value=""/>	Greater Than					Less Than				
	% Imp Volat Range	<input type="text" value=""/>	to	<input type="text" value=""/>	Greater Than					Less Than				
	Volatility Ratio	<input type="text" value=""/>	to	<input type="text" value=""/>	Greater Than					Less Than				
	% To Double	<input type="text" value=""/>	to	<input type="text" value=""/>	Greater Than					Less Than				
	Put/Call Vol. Ratio	<input type="text" value=""/>	to	<input type="text" value=""/>	Greater Than					Less Than				
	Time Value	<input type="text" value=""/>	to	<input type="text" value=""/>	Greater Than					Less Than				
	% Time Value	<input type="text" value=""/>	to	<input type="text" value=""/>	Greater Than					Less Than				

Sectors/Industries: All Sectors/Industries
 Recommended Lists: No Lists
 Simple Moving Average: Stock Price > SMA50

Remove Sector/Industry: No Sector/Industry
 Remove Stock Lists: No Lists

H. Before you start to further research and compare your results, click the 'See More/Less Columns' button to make sure you are viewing all the columns that you wish to see.

POWEROptions® Questions? We are here to help you! Call us toll free at 877-992-7971 or international users call 302-992-7971, 9am-5pm ET Mon-Fri

7/12/2007 12:06:03 PM EST Symbol (Lookup): chain | quotes | search summary

Home | My Portfolio | **Covered Call** | Naked Put | Calendar Call | Bull Put Credit | Long Call | Bear Call Credit | Other Strategies | Learning Center | My Account

Covered Calls Home | Quick Find | Option Chain | **Search** | Sample Searches | Search by Symbol | Wizard | Back Test

Mr. Trialer's Covered Call SmartSearchXL Results [See More/Less Columns](#)

7/12/2007 12:06:03 PM EST Real Time August ordered by Assigned - Filtered [Printer Friendly Results](#)

More Info	Company Name	Stock Sym	Last Stock Price & Chg	Option Sym	Expire/Strike & Days To Exp	Opt Bid	Net Debit	% Dnsd. Prot.	% If Unch.	% If Assnd.	% Prob Assnd
	Trina Solar Ltd.	TSL	65.09 (+0.74)	TSLHO	07 AUG 75.0 (37)	3.00	62.09	4.6	4.8	20.8	27.1
	Smith Micro Software Inc.	SMSI	17.13 (-0.18)	QPMHD	07 AUG 20.0 (37)	0.55	16.58	3.2	3.3	20.6	23.0
	Crocs Inc.	CROX	47.85 (-0.73)	CQJHK	07 AUG 55.0 (37)	2.05	45.80	4.3	4.5	20.1	23.9

Research / Analyze / Compare:

- I. Once the results of your search criteria come up, research the individual results using the More Information button (little blue button).
- J. First, click Stock Chart and select 1 Year Snapshot or BigCharts. Using BigCharts is recommended because you can customize the different technical or fundamental data. Make sure the stock is trending in the correct direction for your selected strategy.

POWEROptions® Questions? We are here to help you! Call us toll free at 877-992-7971 or international users call 302-992-7971, 9am-5pm ET Mon-Fri

7/12/2007 12:06:03 PM EST Symbol (Lookup): chain | quotes | search summary

Home | My Portfolio | **Covered Call** | Naked Put | Calendar Call | Bull Put Credit | Long Call | Bear Call Credit | Other Strategies | Learning Center | My Account

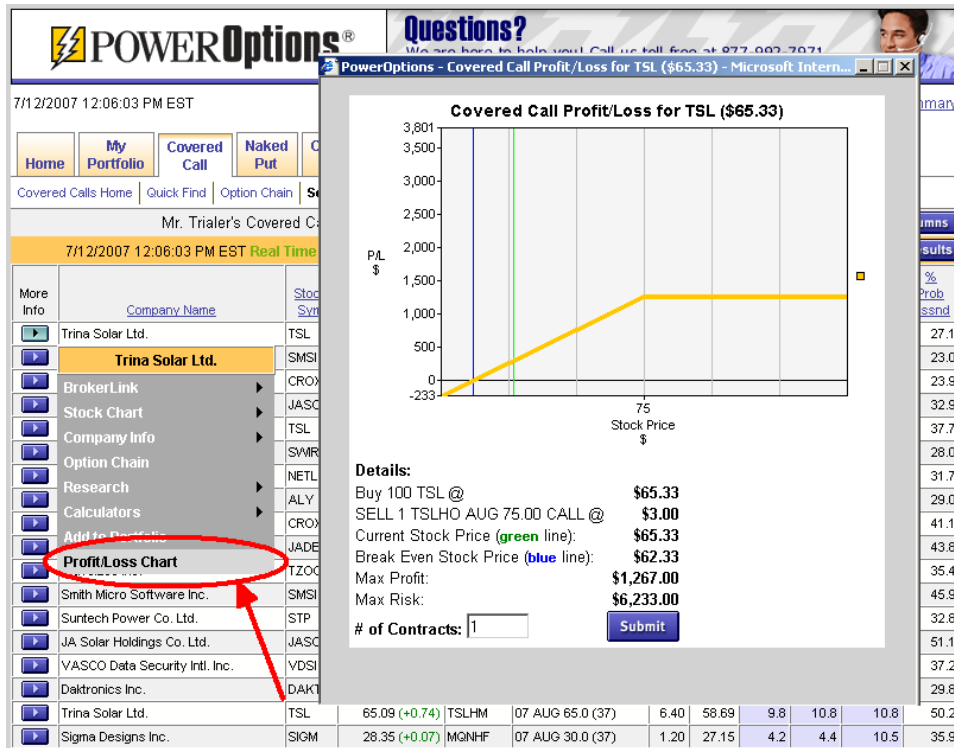
Covered Calls Home | Quick Find | Option Chain | **Search** | Sample Searches | Search by Symbol | Wizard | Back Test

Mr. Trialer's Covered Call SmartSearchXL Results [See More/Less Columns](#)

7/12/2007 12:06:03 PM EST Real Time August ordered by Assigned - Filtered [Printer Friendly Results](#)

More Info	Company Name	Stock Sym	Last Stock Price & Chg	Option Sym	Expire/Strike & Days To Exp	Opt Bid	Net Debit	% Dnsd. Prot.	% If Unch.	% If Assnd.	% Prob Assnd
	Trina Solar Ltd.	TSL	65.09 (+0.74)	TSLHO	07 AUG 75.0 (37)	3.00	62.09	4.6	4.8	20.8	27.1
	Trina Solar Ltd.										
	BrokerLink	CROX	47.85 (-0.73)	CQJHK	07 AUG 55.0 (37)	2.05	45.80	4.3	4.5	20.1	23.9
	Stock Chart			QJPHI	07 AUG 45.0 (37)	2.50	37.80	6.2	6.6	19.0	32.9
	Company Info			TSLHN	07 AUG 70.0 (37)	4.50	60.59	6.9	7.4	15.5	37.7
	Option Chain			IYQHF	07 AUG 30.0 (37)	0.90	26.33	3.3	3.4	13.9	28.0
	Research	NETL	32.47 (+0.22)	LKTHG	07 AUG 35.0 (37)	1.40	30.77	4.4	4.5	13.7	31.7
	Calculators	ALY	27.41 (+0.56)	ALYHF	07 AUG 30.0 (37)	0.85	26.56	3.1	3.2	13.0	29.0
	Add to Portfolio	CROX	47.85 (-0.73)	CQJHU	07 AUG 50.0 (37)	3.50	44.35	7.3	7.9	12.7	41.1
	Profit/Loss Chart	JADE	12.02 (+0.16)	UODHV	07 AUG 12.5 (37)	0.85	11.17	7.1	7.6	11.9	43.8
		TZOO	28.10 (-0.29)	QTVHF	07 AUG 30.0 (37)	1.25	26.85	4.4	4.7	11.7	35.4

- K. Next, select the Profit/Loss Chart from the More Information menu (last choice in the side menu). Although the risk-reward values are shown in the column field, sometimes a graphical interpretation can give you a better feel for the position.



- L. Click Company Info to get a better feel for the stock that came up in the results, as you may not know the company. You can link to the company profile, earnings and events (you might not want to trade the position if the stock has earnings during that expiration month), and the news headlines to check if anything is hanging over the company's head.

Mr. Trialer's Covered Call SmartSearchXL Results

August ordered by Assigned - Filtered

More Info	Company Name	Stock Sym	Last Stock Price & Cha	Option Sym	Expire/Strike & Days To Exp	Opt Bid	Net Debit	% Dnsd Prot.	% If Unch.	% If Asand.	% Prob Assnd.	
Trina Solar Ltd.	TSL	65.09 (+0.74)	TSLHO	07 AUG 75.0 (37)	3.00	62.09	4.6	4.8	20.8	27.1		
Trina Solar Ltd.	SMSI	17.13 (-0.15)	QPMHD	07 AUG 20.0 (37)	0.55	16.58	3.2	3.3	20.6	23.0		
BrokerLink	CROX	47.85 (-0.73)	CQJHK	07 AUG 55.0 (37)	2.05	45.80	4.3	4.5	20.1	23.9		
Stock Chart	JASCO	40.00 (-1.46)	QJPHI	07 AUG 45.0 (37)	2.50	37.80	6.2	6.6	19.0	32.9		
Company Info			News	4	TSLHN	07 AUG 70.0 (37)	4.50	60.59	6.9	7.4	15.5	37.7
Option Chain			Earnings / Events	7	IYGHF	07 AUG 30.0 (37)	0.90	26.33	3.3	3.4	13.9	28.0
Research			Profile	6	LKTHG	07 AUG 35.0 (37)	1.40	30.77	4.4	4.5	13.7	31.7
Calculators	CROX	47.85 (-0.73)	CQJHU	07 AUG 50.0 (37)	3.50	44.35	7.3	7.9	12.7	41.1		
Add to Portfolio	JADE	12.02 (+0.16)	UODHV	07 AUG 12.5 (37)	0.85	11.17	7.1	7.6	11.9	43.8		
Profit/Loss Chart	TZOO	28.10 (-0.29)	QTVHF	07 AUG 30.0 (37)	1.25	26.85	4.4	4.7	11.7	35.4		

M. Next, link to the Research tool to get a full view of the stock's fundamental data and the complete option data, as well as historical option prices and values as well.

POWEROptions® Questions? We are here to help you! Call us toll free at 877-992-7971 or international users call 302-992-7971, 9am-5pm ET Mon-Fri

7/12/2007 12:06:03 PM EST Symbol (Lookup): chain | quotes | search summary

Home My Portfolio Covered Call Naked Put Calendar Call Bull Put Credit Long Call Bear Call Credit Other Strategies Learning Center My Account

Covered Calls Home Quick Find Option Chain Search Sample Searches Search by Symbol Wizard Back Test

Mr. Trialer's Covered Call SmartSearchXL Results See More/Less Columns

7/12/2007 12:06:03 PM EST Real Time August ordered by Assigned - Filtered Printer Friendly Results

More Info	Company Name	Stock Sym	Last Stock Price & Chg	Option Sym	Expire/Strike & Days To Exp	Opt Bid	Net Debit	% Dnsd. Prot.	% If Unch.	% If Assnd.	% Prob Assnd.
▶	Trina Solar Ltd.	TSL	65.09 (+0.74)	TSLHO	07 AUG 75.0 (37)	3.00	62.09	4.6	4.8	20.8	27.1
▶	Trina Solar Ltd.	SMSI	17.13 (-0.18)	QPMHD	07 AUG 20.0 (37)	0.55	16.58	3.2	3.3	20.6	23.0
▶	BrokerLink	CROX	47.85 (-0.73)	CQJHK	07 AUG 55.0 (37)	2.05	45.80	4.3	4.5	20.1	23.9
▶	Stock Chart	JASO	40.30 (+1.46)	QJPHI	07 AUG 45.0 (37)	2.50	37.80	6.2	6.6	19.0	32.9
▶	Company Info	TSL	65.09 (+0.74)	TSLHN	07 AUG 70.0 (37)	4.50	60.59	6.9	7.4	15.5	37.7
▶	Option Chain	SMR	27.23 (+0.77)	IYGHF	07 AUG 30.0 (37)	0.90	26.33	3.3	3.4	13.9	28.0
▶	Research			LKTHG	07 AUG 35.0 (37)	1.40	30.77	4.4	4.5	13.7	31.7
▶	Calculators			ALYHF	07 AUG 30.0 (37)	0.85	26.56	3.1	3.2	13.0	29.0
▶	Add to Portfolio			CQJHJ	07 AUG 50.0 (37)	3.50	44.35	7.3	7.9	12.7	41.1
▶	Profit/Loss Chart	JADE	12.02 (+0.16)	UODHV	07 AUG 12.5 (37)	0.85	11.17	7.1	7.6	11.9	43.8
▶	Travelzoo Inc.	TZOO	28.10 (-0.29)	QTVHF	07 AUG 30.0 (37)	1.25	26.85	4.4	4.7	11.7	35.4

N. Now that you have researched the company and viewed other possible trades on the underlying security, link to the Calculator tools from the More Information buttons in SmartSearchXL. Use the Strategy Calculator to view the returns based on your personal cost basis and commission costs, or use the Black-Scholes calculator to estimate the theoretical price of your option at any time between now and expiration.

POWEROptions® Questions? We are here to help you! Call us toll free at 877-992-7971 or international users call 302-992-7971, 9am-5pm ET Mon-Fri

7/12/2007 12:06:03 PM EST Symbol (Lookup): chain | quotes | search summary

Home My Portfolio Covered Call Naked Put Calendar Call Bull Put Credit Long Call Bear Call Credit Other Strategies Learning Center My Account

Covered Calls Home Quick Find Option Chain Search Sample Searches Search by Symbol Wizard Back Test

Mr. Trialer's Covered Call SmartSearchXL Results See More/Less Columns

7/12/2007 12:06:03 PM EST Real Time August ordered by Assigned - Filtered Printer Friendly Results

More Info	Company Name	Stock Sym	Last Stock Price & Chg	Option Sym	Expire/Strike & Days To Exp	Opt Bid	Net Debit	% Dnsd. Prot.	% If Unch.	% If Assnd.	% Prob Assnd.
▶	Trina Solar Ltd.	TSL	65.09 (+0.74)	TSLHO	07 AUG 75.0 (37)	3.00	62.09	4.6	4.8	20.8	27.1
▶	Trina Solar Ltd.	SMSI	17.13 (-0.18)	QPMHD	07 AUG 20.0 (37)	0.55	16.58	3.2	3.3	20.6	23.0
▶	BrokerLink	CROX	47.85 (-0.73)	CQJHK	07 AUG 55.0 (37)	2.05	45.80	4.3	4.5	20.1	23.9
▶	Stock Chart	JASO	40.30 (+1.46)	QJPHI	07 AUG 45.0 (37)	2.50	37.80	6.2	6.6	19.0	32.9
▶	Company Info	TSL	65.09 (+0.74)	TSLHN	07 AUG 70.0 (37)	4.50	60.59	6.9	7.4	15.5	37.7
▶	Option Chain	SMR	27.23 (+0.77)	IYGHF	07 AUG 30.0 (37)	0.90	26.33	3.3	3.4	13.9	28.0
▶	Research			LKTHG	07 AUG 35.0 (37)	1.40	30.77	4.4	4.5	13.7	31.7
▶	Calculators			ALYHF	07 AUG 30.0 (37)	0.85	26.56	3.1	3.2	13.0	29.0
▶	Add to Portfolio			CQJHJ	07 AUG 50.0 (37)	3.50	44.35	7.3	7.9	12.7	41.1
▶	Profit/Loss Chart	JADE	12.02 (+0.16)	UODHV	07 AUG 12.5 (37)	0.85	11.17	7.1	7.6	11.9	43.8
▶		TZOO	28.10 (-0.29)	QTVHF	07 AUG 30.0 (37)	1.25	26.85	4.4	4.7	11.7	35.4

Place the Trade:

O. You are now ready to make your trade. If you have an account with one of our partner brokerage firms, you can use the Broker Link in the More Information menu to link the trade from PowerOptions directly to your account. Otherwise, simply go to your broker and place your trade.

- P. Make sure to check with your broker before placing the trade, to make sure the option does not have any special delivery requirements or special features.
- Q. Once you have submitted the trade with your broker, you can add the trade into the My Portfolio tool on PowerOptions to paper trade and/or track your position. Again, this can be done from the More Information menu in the search tools by clicking 'Add to Portfolio,' or you can enter it in manually by going to the My Portfolio tool.

7/12/2007 12:06:03 PM EST

Symbol (Lookup): [chain](#) | [quotes](#) | [search summary](#)

Home **My Portfolio** Covered Call Naked Put Calendar Call Bull Put Credit Long Call Bear Call Credit Other Strategies Learning Center My Account

Covered Calls Home Quick Find Option Chain Search Sample Searches Search by Symbol Wizard Back Test

Mr. Trialer's Covered Call SmartSearchXL Results [See More/Less Columns](#)

7/12/2007 12:06:03 PM EST Real Time August ordered by Assigned - Filtered [Printer Friendly Results](#)

More Info	Company Name	Stock Sym	Last Stock Price & Chg	Option Sym	Expire/Strike & Days To Exp	Opt Bid	Net Debit	% Dnsd. Prot.	% If Unch.	% If Assnd.	% Prob Assnd
	Trina Solar Ltd.	TSL	65.09 (+0.74)	TSLHO	07 AUG 75.0 (37)	3.00	62.09	4.6	4.8	20.8	27.1
	Trina Solar Ltd.	SMSI	17.13 (-0.18)	GPMHD	07 AUG 20.0 (37)	0.55	16.58	3.2	3.3	20.6	23.0
		CROX	47.85 (-0.73)	CQJHK	07 AUG 55.0 (37)	2.05	45.80	4.3	4.5	20.1	23.9
	BrokerLink	JASO	40.30 (+1.46)	QJPHI	07 AUG 45.0 (37)	2.50	37.80	6.2	6.6	19.0	32.9
	Stock Chart	TSL	65.09 (+0.74)	TSLHN	07 AUG 70.0 (37)	4.50	60.59	6.9	7.4	15.5	37.7
	Company Info	SWMR	27.23 (+0.77)	IYGHF	07 AUG 30.0 (37)	0.90	26.33	3.3	3.4	13.9	26.0
	Option Chain	NETL	32.17 (+0.22)	LKTHG	07 AUG 35.0 (37)	1.40	30.77	4.4	4.5	13.7	31.7
	Research	ALY	27.41 (+0.56)	ALYHF	07 AUG 30.0 (37)	0.85	26.56	3.1	3.2	13.0	29.0
	Calculators	CROX	47.85 (-0.73)	CQJHJ	07 AUG 50.0 (37)	3.50	44.35	7.3	7.9	12.7	41.1
	Add to Portfolio	JADE	12.02 (+0.16)	UODHV	07 AUG 12.5 (37)	0.85	11.17	7.1	7.6	11.9	43.8
	Profit/Loss Chart	TZOO	26.10 (-0.29)	GTVHF	07 AUG 30.0 (37)	1.25	26.85	4.4	4.7	11.7	35.4

Paper Trade / Track / Manage the Position:

- R. The Portfolio tool will now track the liquidation value(s) of your position(s) with updates every 20 minutes or in Real Time (depending on your level of service).

7/12/2007 1:01:35 PM EST

Symbol (Lookup): [chain](#) | [quotes](#) | [search summary](#)

Home **My Portfolio** Covered Call Naked Put Calendar Call Bull Put Credit Long Call Bear Call Credit Other Strategies Learning Center My Account

My Portfolio Home Profit/Loss Portfolios Historical Reports Analysis Snapshots Allocation Setup

My Portfolio Introduction [hide](#)

The "My Portfolio" tool is for tracking and managing your positions. Both real and paper trades can be tracked in the Profit/Loss Portfolio. Notes can be kept on each position with stock and option stop alerts.

My Portfolio Overview [hide](#)

- » To start, go into 'Portfolio Setup' and create a starting basis and cash on hand.
- » Record trades automatically from the search tools using More Info buttons or enter them manually.
- » Create multiple portfolios to track various accounts.
- » Multiple leg strategies appear as linked positions for easy analysis.
- » Quick links allow simple management and position adjustment, as well as detailed Position Analysis on existing trades.
- » Closed positions are recorded in the Historical Portfolio.
- » Overview all positions using Portfolio Analysis, Sector/Industry Analysis and Snapshot Portfolios.
- » For more information on using the Position Portfolio, view the [Using the Position Portfolio](#) tipsheet.

My Portfolio Tools

- » **Profit/Loss Portfolios** Enter and view your open equity, index, and option positions.
- » [Portfolio Historical Reports](#) View all realized and/or unrealized gains/losses for your positions.
- » [Portfolio Analysis](#) Analyze all positions for any given stock/index.
- » [Portfolio Snapshots](#) View today's gains and losses from your position portfolio.
- » [Sector/Industry Allocation Analysis](#) Analyze your current asset allocation by sector and industry.
- » [Portfolio Setup](#) Create, adjust, and delete position portfolios.

PowerWatch® List 1

Info	Sym	Price	Chng
Watch List 1 Empty			
<input type="text"/>	<input type="text"/>	<input type="text"/>	<input type="text"/>
		Add	Delete

- S. Using the More Information buttons in the Profit/Loss Position Portfolio you can manage your position by selecting 'Position Options'. This will allow you to Edit, Delete, Close, etc.

POWEROptions® Questions? We are here to help you! Call us toll free at 877-992-7971 or international users call 302-992-7971, 9am-5pm ET Mon-Fri

7/12/2007 1:05:33 PM EST Symbol (Lookup): chain | quotes | search summary

Home My Portfolio Covered Call Naked Put Calendar Call Bull Put Credit Long Call Bear Call Credit Other Strategies Learning Center My Account

My Portfolio Home Profit/Loss Portfolios Historical Reports Analysis Snapshots Allocation Setup

covered call portfolio Only view options expiring in: All Months

Edit/More Info	Notes/Stop Limits	Issue Symbol	Description	Qty	Trans. Date	Age	Net Cost \$	Pos. Price	Curr. Price	Chng. Today	Pos. Chng.	Gain/Loss \$	Gain/Loss %	Market Value
		TSL	Trina Solar Ltd.	100	7/12/2007	0	6,537.95	65.25	65.30	0.05	0.05	-7.95	-0.1	\$ 6,530.00
			Trina Solar Ltd.											
			[TSL @ 65.30 +0.95]	-1	7/12/2007	(37)	-287.05	3.00	3.50	0.50	0.50	-62.95	-21.9	\$ -350.00
							Total Costs							Market Value Sum \$ 6,180.00
							Total Income							Cash On Hand \$ 94,830.30
							Return on Account							Total Value \$ 101,010.30

Position Options menu:

- Position Analysis
- Edit Position
- Delete
- Close This Leg
- Close Position
- Make Collar
- Profit/Loss Chart

- T. You can select to have the Portfolio positions emailed to you at market close. You can also back up your positions into Excel to implement your personal spreadsheet. If a position has dropped more than 80% in value, a message will appear at the bottom of the Profit/Loss Position field notifying you of the change.
- U. As expiration approaches, link from your position in the Profit/Loss Position Portfolio into the Position Analysis tool. This will reflect your Original Cost Basis, the Current Liquidation Value, and the Future Expiration Value (if the stock stays at the same price between now and expiration).

POWEROptions® Click Here to Get a FREE Month

7/12/2007 1:12:29 PM EST Symbol (Lookup): chain | quotes | search summary

Home My Portfolio Covered Call Naked Put Calendar Call Bull Put Credit Long Call Bear Call Credit Other Strategies Learning Center My Account

My Portfolio Home Profit/Loss Portfolios Historical Reports Analysis Snapshots Allocation Setup

covered call portfolio Only view options expiring in: All Months

Edit/More Info	Notes/Stop Limits	Issue Symbol	Description	Qty	Trans. Date	Age	Net Cost \$	Pos. Price	Curr. Price	Chng. Today	Pos. Chng.	Gain/Loss \$	Gain/Loss %	Market Value
		TSL	Trina Solar Ltd.	100	7/12/2007	0	6,537.95	65.25	65.38	1.03	0.13	0.05	0.0	\$ 6,538.00
			Trina Solar Ltd.											
			[TSL @ 65.38 +1.03]	-1	7/12/2007	(37)	-287.05	3.00	3.50	0.50	0.50	-62.95	-21.9	\$ -350.00
							Total Costs							Market Value Sum \$ 6,188.00
							Total Income							Cash On Hand \$ 94,830.30
							Return on Account							Total Value \$ 101,010.30

Position Options menu:

- Position Analysis
- Edit Position
- Delete
- Close This Leg
- Close Position
- Make Collar
- Profit/Loss Chart

- V. Roll Out Opportunities are also shown for selected strategies. Evaluate the potential Roll Out Opportunities for the position using the Position Analysis tool, or go to the Option Chain or Search by Symbol tool to view potential trades on the security for the next expiration month.

Roll Out Opportunities...

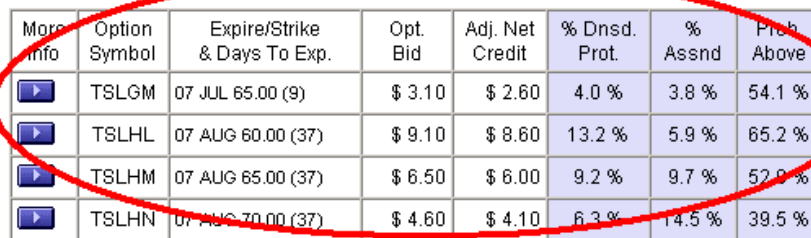
[Details](#)

Here are some potential roll-out opportunities. These are not all opportunities possible, just a selection. These are based on a couple of selection criteria.

For in the money covered calls, your roll out opportunities shown are where the new option bid price is at least 70% of the original premium. For out of the money covered calls, we only show options where the new option sell price will be at least 50% of the original premium for the last option sale.

There are other roll opportunities if you consult the [OptionChain Tool](#).

You could buy to close the TSLHO (07 AUG 75.00) for \$3.50 /cont and sell to open (write) one of the below calls...



More Info	Option Symbol	Expire/Strike & Days To Exp.	Opt. Bid	Adj. Net Credit	% Dnsd. Prot.	% Assnd	Prob. Above
	TSLGM	07 JUL 65.00 (9)	\$ 3.10	\$ 2.60	4.0 %	3.8 %	54.1 %
	TSLHL	07 AUG 60.00 (37)	\$ 9.10	\$ 8.60	13.2 %	5.9 %	65.2 %
	TSLHM	07 AUG 65.00 (37)	\$ 6.50	\$ 6.00	9.2 %	9.7 %	52.9 %
	TSLHN	07 AUG 70.00 (37)	\$ 4.60	\$ 4.10	6.3 %	14.5 %	39.5 %

Follow Up:

- W. Follow steps I through O to Research, Analyze, and Compare the potential Roll Out trades.
 X. Once you have selected a Roll Out Position, Follow steps P through R.
 Y. If you are liquidating your position, or if you are going to let yourself be assigned, on Monday morning after expiration, start from step A and repeat the process for the next expiration month.

PowerOptions Contact Info:

Web Site:

<http://www.poweropt.com/>

Mailing Info:

Power Financial Group, Inc.
 494 First State Blvd
 Wilmington, DE 19804

Telephone:

Office hours are 9am to 6pm Eastern when markets are open.
 Local & International: 302-992-7971
 Continental US Only Toll Free: 877-992-7971

Email:

support@poweropt.com